

Manufacturers & Stockists of Nickel Alloy, Titanium Alloys, Special Metals & Stainless Steel Products

ELBOW

We at Jade Special Metals are one of the well-known manufacturers, traders and suppliers of Butt-weld Elbows. We have developed products for a range of industries over the years. We have a range of products that we develop and design to address the needs of the markets effectively.

Our Elbows are available in many alloys to meet the specific requirements of the customers as per the applications. We are always ready to take that extra step to help our customers in helping them find products that fit their need perfectly. We offer Elbows in variety of sizes, thickness, grades, standards and finishes.

Our Elbows are available in Stainless Steel, Carbon Steel, Alloy Steel, Titanium, Hastelloy, Inconel, Copper-nickel, Incoloy, Titanium and more.



Standards : ASME/ANSI - B16.9, ASTM A403 - ASME SA403, ASME B16.9, ASME B16.25, ASME B16.28, MSS SP-43.

Thickness : Schedule 5S, 10S, 20S, S10, S20, S30, STD, 40S, S40, S60, XS, 80S, S80, S100, S120, S140, S160, XXS and etc.

Size : Seamless Elbow (1/2" ~ 24"), ERW / Welded / Fabricated Elbow (1/2" ~ 48").

Type : Seamless / ERW / Welded / Fabricated

Form : Elbow, 45 Deg Elbow, 90 Deg Elbow, 180 Deg Elbow, Long Radius Elbow, Short Radius Elbow, 1D Elbow, 3D Elbow, 5D Elbow

Elbow Material & Grades

Stainless Steel Elbow :

ASTM A403 WP316/316L, ASTM A403 SA / A 774 WP-S, WP-W, WP-WX 304/304L, ASTM A182 F316L, 304L, DIN 1.4301, DIN1.4306, DIN 1.4401, DIN 1.4404

Duplex & Super Duplex Steel Elbow :

ASTM A815, ASME SA 815 UNS NO S31803, S32205. UNS S32750, S32950. Werkstoff No. 1.4462

Carbon Steel Elbow :

ASTM A234, ASME SA234 WPB , WPBW, WPHY 42, WPHY 46, WPHY 52, WPH 60, WPHY 65 & WPHY 70.

Low Temperature Carbon Steel Elbow : ASTM A420 WPL3, A420 WPL6

Manufacturers & Stockists of Nickel Alloy, Titanium Alloys, Special Metals & Stainless Steel Products

Alloy Steel Elbow :

ASTM / ASME A/SA 234 Gr. WP 1, WP 5, WP 9, WP 11, WP 12, WP 22, WP 91

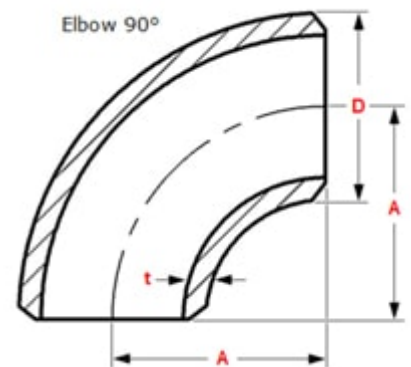
Copper Alloy Steel Elbow : ASTM B122, B171, B466, B467, ASTM SB 61 , SB62 , SB151 , SB152 UNS No. C70600 (Cu-Ni 90/10), C 71500 (Cu-Ni 70/30), UNS No. C 10100, 10200, 10300, 10800, 12000, 12200

Nickel Alloy Buttweld Elbow:

ASTM SB564, SB160, SB472, SB162 Nickel 200 (UNS No. N02200), Nickel 201 (UNS No. N02201), Monel 400 (UNS No. N04400), Monel 500 (UNS No. N05500), Inconel 800 (UNS No. N08800), Inconel 825 (UNS No. N08825), Inconel 600 (UNS No. N06600), Inconel 625 (UNS No. N06625), Inconel 601 (UNS No. N06601), Hastelloy C 276 (UNS No. N10276), Alloy 20 (UNS No. N08020), Titanium (Grade 2 & 5)

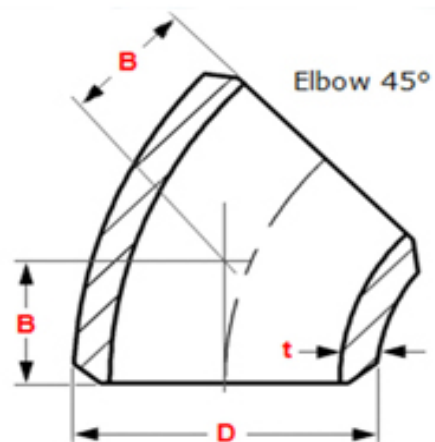
90 Degree Elbows

Jade Special Metals is one of the finest distinguished exporters and manufactures of 90 Degree Elbow Pipe Fittings, which can further be customized in terms of sizes and thicknesses as per specific requirements given by our esteemed clients. Meanwhile, these Stainless Steel 90 Degree Elbow Pipe Fittings are as well offer a cost effective option to fabricating rings from steel plate. By combining the most recent in ring rolling technology with skilled people, we deliver these Carbon Steel 90 Degree Elbow Pipe Fittings at the lowest possible cost. Super Duplex Steel 90 Degree Elbow Pipe Fittings is more frequently used than any other metal, and has extensively well-liked for its low cost and versatility.



45 DEGREE ELBOWS

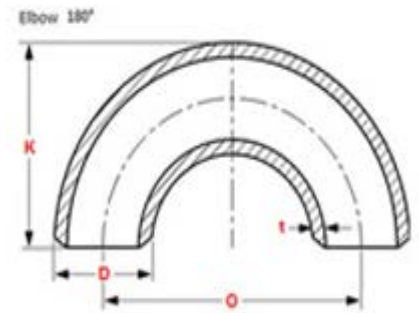
Jade Special Metals is one of the finest distinguished exporters and suppliers of 45 Degree Elbow Pipe Fittings, which is used for different engineering application all over the industries. Specifications of these Stainless Steel 45 Degree Elbow Pipe Fittings are as well defined by the adding up of parts such as silicon, Sulphur, phosphorous and manganese. Meanwhile, these Carbon Steel 45 Degree Elbow Pipe Fittings are also used in Oil and Gas Industry, Chemical Industry, Water Treatment Industry, Steel Industry and more. Our Super Duplex Steel 45 Degree Elbow Pipe Fittings are extremely efficient that cause to be reliable performance for longer period of time. Alloy Steel 45 Degree Elbow Pipe Fittings are much less magnetic than regular steel fasteners despite the fact that some grades will be magnetic to some extent.



Manufacturers & Stockists of Nickel Alloy, Titanium Alloys, Special Metals & Stainless Steel Products

180 DEGREE ELBOWS

Jade Special Metals is one of the finest distinguished exporters and traders of 180 Degree Elbow Pipe Fittings, which may possibly be welded by means of traditional methods. Premeditated from superior grade of steels, these Stainless Steel 180 Degree Elbow Pipe Fittings are provided to our valuable customers in customized and standard specifications. Our Carbon Steel 180 Degree Elbow Pipe Fittings are significantly harder and stronger with respect to other grades. Also, our Alloy Steel 180 Degree Elbow Pipe Fittings is virtually irreplaceable in resisting oxidation at elevated temperatures. Super Duplex Steel 180 Degree Elbow Pipe Fittings also raises the tensile, yield, and hardness at room temperatures. Meanwhile, these Inconel Alloy 180 Degree Elbow Pipe Fittings are used for different applications such as in Military Aircraft, Commercial aircraft, Automotive, Hydraulic tools, Machine tools, Aerospace, Auto racing and others.



We offer wide range of Elbows that in compliance with ASTM, ANSI, IS, BS and DIN standards at best Market prices in India. To know more about the latest price of Elbows please feel free to contact us on sales@jadealloys.com or call us on +91 9987685906

Manufacturers & Stockists of Nickel Alloy, Titanium Alloys, Special Metals & Stainless Steel Products

REDUCER

Today the large numbers of producers have been cropped using own well defined techniques for producing Butt-weld Reducer. With the advancement of technology the producers are making use of advanced tools or machineries and of course high quality of raw substances for manufacturing products that can be easily sustained even in harsh environments. The reducers are available in different alloys for perfectly meeting the specific needs of customers according to application nature. A good producer always puts extra efforts in producing superior quality of reducers and helps their customers in finding products that is ideal for the application needs. The Eccentric Reducers Manufacturer offers it in varieties of sizes, shapes, thickness, finishes, grade, standards etc. The reducers is available in titanium, incoloy, stainless steel, copper nickel, inconel, Hastelloy, carbon steel etc



Standards : ASME/ANSI - B16.9, ASTM A403 - ASME SA403, ASME B16.9, ASME B16.25, ASME B16.28, MSS SP-43.

Thickness : Schedule 5S, 10S, 20S, S10, S20, S30, STD, 40S, S40, S60, XS, 80S, S80, S100, S120, S140, S160, XXS and etc.

Size : Seamless (1/2" ~ 24"), ERW / Welded / Fabricated Reducer (1/2" ~ 48").

Type : Seamless / ERW / Welded / Fabricated

Form : Concentric / Eccentric

Reducer Material & Grades

Stainless Steel Reducer :

ASTM A403 WP316/316L, ASTM A403 SA / A 774 WP-S, WP-W, WP-WX 304/304L, ASTM A182 F316L, 304L, DIN 1.4301, DIN1.4306, DIN 1.4401, DIN 1.4404

Duplex & Super Duplex Steel Reducer :

ASTM A815, ASME SA 815 UNS NO S31803, S32205. UNS S32750, S32950. Werkstoff No. 1.4462

Carbon Steel Reducer :

ASTM A234, ASME SA234 WPB , WPBW, WPHY 42, WPHY 46, WPHY 52, WPH 60, WPHY 65 & WPHY 70.

Low Temperature Carbon Steel Reducer : ASTM A420 WPL3, A420 WPL6

Manufacturers & Stockists of Nickel Alloy, Titanium Alloys, Special Metals & Stainless Steel Products

Alloy Steel Reducer:

ASTM / ASME A/SA 234 Gr. WP 1, WP 5, WP 9, WP 11, WP 12, WP 22, WP 91

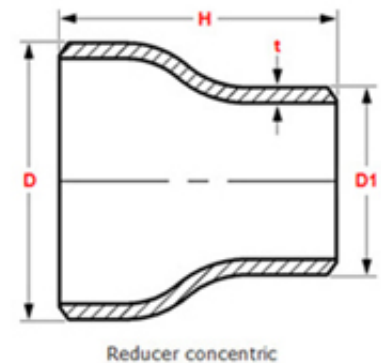
Copper Alloy Steel Reducer: ASTM B122, B171, B466, B467, ASTM SB 61, SB62, SB151, SB152 UNS No. C70600 (Cu-Ni 90/10), C 71500 (Cu-Ni 70/30), UNS No. C 10100, 10200, 10300, 10800, 12000, 12200

Nickel Alloy Buttweld Reducer:

ASTM SB564, SB160, SB472, SB162 Nickel 200 (UNS No. N02200), Nickel 201 (UNS No. N02201), Monel 400 (UNS No. N04400), Monel 500 (UNS No. N05500), Inconel 800 (UNS No. N08800), Inconel 825 (UNS No. N08825), Inconel 600 (UNS No. N06600), Inconel 625 (UNS No. N06625), Inconel 601 (UNS No. N06601), Hastelloy C 276 (UNS No. N10276), Alloy 20 (UNS No. N08020), Titanium (Grade 2 & 5)

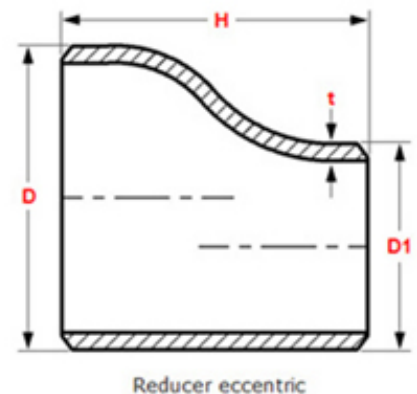
Concentric Reducer

Jade Special Metals is one of the finest distinguished exporters and distributors of Concentric Reducer Pipe Fittings, which are reliable, durable and keep a good hold of their potency under stress. Stainless Steel Concentric Reducer Pipe Fittings that are being supplied by us are quite recognized for their durability, good quality and high-performance. Meanwhile, the whole range of these Carbon Steel Concentric Reducer Pipe Fittings is manufactured by using qualitative material sourced from trustworthy experts. These Super Duplex Steel Concentric Reducer Pipe Fittings are very much commended by huge number of customers for their great features such as toughness, elevated tensile strength, and commercial price. These Alloy Steel Concentric Reducer Pipe Fittings are the most effectual single stabilizer that raises soaring temperature creep strength.



Eccentric Reducer

Jade Special Metals is one of the finest distinguished exporters and sellers of Eccentric Reducer Pipe Fittings, which is a rust free product in the company of fine finish. Stainless Steel Eccentric Reducer Pipe Fittings are designed to feature high strength, resistance to pitting, stress corrosion cracking, erosion corrosion and corrosion fatigue, crevice corrosion and strong weld ability. These Carbon Steel Eccentric Reducer Pipe Fittings also provide excellent resistance to inorganic acids, especially those containing chlorides. Alloy Steel Eccentric Reducer Pipe Fittings, it is an alloyed titanium product containing 6 percent Aluminum and 4 percent Vanadium; is a medium strength product. Our Super Duplex Steel Eccentric Reducer Pipe Fittings meets all critical industrial specifications, as well as providing prime quality material.



Manufacturers & Stockists of Nickel Alloy, Titanium Alloys, Special Metals & Stainless Steel Products

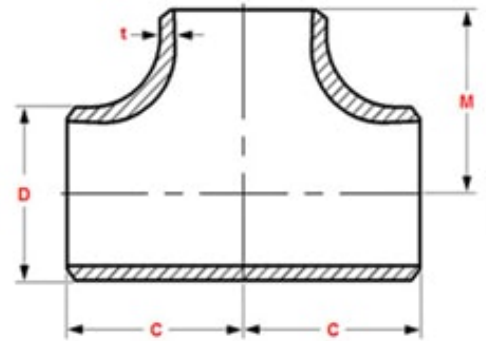


We offer wide range of Reducer that in compliance with ASTM, ANSI, IS, BS and DIN standards at best Market prices in India. To know more about the latest price of Reducer please feel free to contact us on sales@jadealloys.com or call us on +91 9987685906

Manufacturers & Stockists of Nickel Alloy, Titanium Alloys, Special Metals & Stainless Steel Products

EQUAL TEE & REDUCING TEE

Jade Special Metals are the Butt-weld Equal Tee Manufacturer, stocker, and exporter and our products are being shipped all across the countries. All of the dimensions and designs largely conform to the required ASME and similar grades. To fulfill the requirements of our customers, all of the products are available in varied range and are designed out of numerous alloys like carbon steels, alloy steels, stainless steels, along with the non-ferrous metals which are certified to the high class standards. With special wall thickness and reducing sizes, our Butt-weld Equal Tee is available even in the customized shapes and designs as per the need of the clients. We being the Butt-weld Tees providers, serve out the users with excellent product quality which possess huge durability. The tees are generally used to connect various pipes that are of different diameters and also for changing the direction of the pipe runs. On one side where equal tees come up with similar sized ends, the reducing tees generally come up with a varied combination of different sized outlets.



Standards : ASME/ANSI - B16.9, ASTM A403 - ASME SA403, ASME B16.9, ASME B16.25, ASME B16.28, MSS SP-43.

Thickness : Schedule 5S, 10S, 20S, S10, S20, S30, STD, 40S, S40, S60, XS, 80S, S80, S100, S120, S140, S160, XXS and etc.

Size : Seamless Tee (1/2" ~ 24"), ERW / Welded / Fabricated Tee(1/2" ~ 48").

Type : Seamless / ERW / Welded / Fabricated

Form : Equal Tee & Reducing Tee

Tee Material & Grades

Stainless Steel Tee :

ASTM A403 WP316/316L, ASTM A403 SA / A 774 WP-S, WP-W, WP-WX 304/304L, ASTM A182 F316L, 304L, DIN 1.4301, DIN1.4306, DIN 1.4401, DIN 1.4404

Duplex & Super Duplex Steel Tee :

ASTM A815, ASME SA 815 UNS NO S31803, S32205. UNS S32750, S32950. Werkstoff No. 1.4462

Carbon Steel Tee :

ASTM A234, ASME SA234 WPB , WPBW, WPHY 42, WPHY 46, WPHY 52, WPH 60, WPHY 65 & WPHY 70.

Manufacturers & Stockists of Nickel Alloy, Titanium Alloys, Special Metals & Stainless Steel Products

Low Temperature Carbon Steel Tee : ASTM A420 WPL3, A420 WPL6

Alloy Steel Tee :

ASTM / ASME A/SA 234 Gr. WP 1, WP 5, WP 9, WP 11, WP 12, WP 22, WP 91

Copper Alloy Steel Tee : ASTM B122, B171, B466, B467, ASTM SB 61 , SB62 , SB151 , SB152 UNS No. C70600 (Cu-Ni 90/10), C 71500 (Cu-Ni 70/30), UNS No. C 10100, 10200, 10300, 10800, 12000, 12200

Nickel Alloy Butt-weld Tee:

ASTM SB564, SB160, SB472, SB162 Nickel 200 (UNS No. N02200), Nickel 201 (UNS No. N02201), Monel 400 (UNS No. N04400), Monel 500 (UNS No. N05500), Inconel 800 (UNS No. N08800), Inconel 825 (UNS No. N08825), Inconel 600 (UNS No. N06600), Inconel 625 (UNS No. N06625), Inconel 601 (UNS No. N06601), Hastelloy C 276 (UNS No. N10276), Alloy 20 (UNS No. N08020), Titanium (Grade 2 & 5)

EQUAL TEE



REDUCING TEE

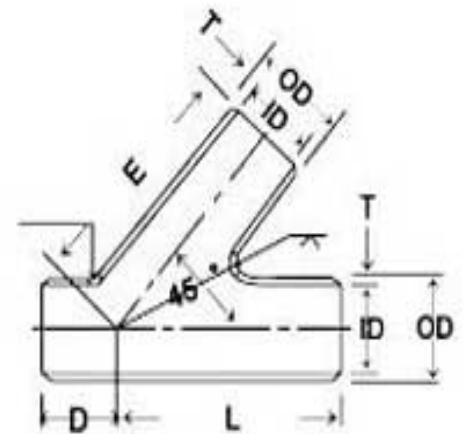


We offer wide range of Tee that in compliance with ASTM, ANSI, IS, BS and DIN standards at best Market prices in India. To know more about the latest price of Tee please feel free to contact us on sales@jadealloys.com or call us on +91 9987685906

Manufacturers & Stockists of Nickel Alloy, Titanium Alloys, Special Metals & Stainless Steel Products

LATERAL TEE

Jade Special Metals is an approved manufacturer of Butt-weld Lateral Tee & we are ISO 9001:2008 certified company. We are Stainless Steel Lateral Tee Manufacturers in various shapes, size, grades & specification with ANSI/ASME and DIN standards. Jade Special Metals Industries most preferred manufacturer in INDIA to manufacture ASME B16.9 Lateral Tee for Critical Applications, We manufacture & stock even odd sizes & hard to find fittings in Stainless Steel. We manufacture Stainless Steel Butt-weld Lateral Tee, Duplex Steel Butt-weld Lateral Tee, Alloy steel Butt-weld Lateral Tee, High Nickel Alloy Butt-weld Lateral Tee, Monel 400 Butt-weld Lateral Tee & all shapes & size in various steel material. Our Lateral Tee is as per ASME B16.9, ASME B16.28. standards Our Butt-weld Lateral Tee are used in Marine engineering, Chemical processing, Hydro-carbon processing, Heat exchangers, Valves manufacturing, Pumps manufacturing, Petrochemical plants, Nuclear power projects, Oil & Gas equipment



Standards : ASME/ANSI - B16.9, ASTM A403 - ASME SA403, ASME B16.9, ASME B16.25, ASME B16.28, MSS SP-43.

Thickness : Schedule 5S, 10S, 20S, S10, S20, S30, STD, 40S, S40, S60, XS, 80S, S80, S100, S120, S140, S160, XXS and etc.

Size : Seamless Lateral Tee (1/2" ~ 24"), ERW / Welded / Fabricated Lateral Tee (1/2" ~ 48").

Type : Seamless / ERW / Welded / Fabricated

Form : Equal Lateral Tee & Unequal Lateral Tee

Lateral Tee Material & Grades

Stainless Steel Lateral Tee :

ASTM A403 WP316/316L, ASTM A403 SA / A 774 WP-S, WP-W, WP-WX 304/304L, ASTM A182 F316L, 304L, DIN 1.4301, DIN1.4306, DIN 1.4401, DIN 1.4404

Duplex & Super Duplex Steel Lateral Tee:

ASTM A815, ASME SA 815 UNS NO S31803, S32205. UNS S32750, S32950. Werkstoff No. 1.4462

Carbon Steel Lateral Tee:

ASTM A234, ASME SA234 WPB , WPBW, WPHY 42, WPHY 46, WPHY 52, WPH 60, WPHY 65 & WPHY 70.

Low Temperature Carbon Steel Lateral Tee: ASTM A420 WPL3, A420 WPL6

Manufacturers & Stockists of Nickel Alloy, Titanium Alloys, Special Metals & Stainless Steel Products

Alloy Steel Lateral Tee :

ASTM / ASME A/SA 234 Gr. WP 1, WP 5, WP 9, WP 11, WP 12, WP 22, WP 91

Copper Alloy Steel Lateral Tee: ASTM B122, B171, B466, B467, ASTM SB 61 , SB62 , SB151 , SB152 UNS No. C70600 (Cu-Ni 90/10), C 71500 (Cu-Ni 70/30), UNS No. C 10100, 10200, 10300, 10800, 12000, 12200

Nickel Alloy Buttweld Lateral Tee:

ASTM SB564, SB160, SB472, SB162 Nickel 200 (UNS No. N02200), Nickel 201 (UNS No. N02201), Monel 400 (UNS No. N04400), Monel 500 (UNS No. N05500), Inconel 800 (UNS No. N08800), Inconel 825 (UNS No. N08825), Inconel 600 (UNS No. N06600), Inconel 625 (UNS No. N06625), Inconel 601 (UNS No. N06601), Hastelloy C 276 (UNS No. N10276), Alloy 20 (UNS No. N08020), Titanium (Grade 2 & 5)

EQUAL LATERAL TEE



UNEQUAL LATERAL TEE

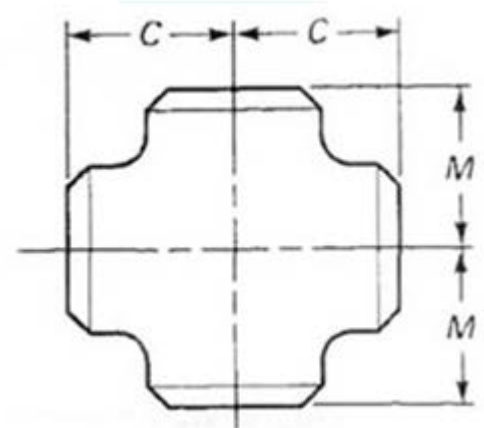


We offer wide range of Lateral Tee that in compliance with ASTM, ANSI, IS, BS and DIN standards at best Market prices in India. To know more about the latest price of Lateral Tee please feel free to contact us on sales@jadealloys.com or call us on +91 9987685906

Manufacturers & Stockists of Nickel Alloy, Titanium Alloys, Special Metals & Stainless Steel Products

CROSS

Jade Special Metals is one of the finest distinguished exporters and traders of Equal & Reducing Cross Pipe Fittings, which are essential constituents when it comes to strapping joining. Stainless Steel Equal Cross Pipe Fittings is a cold drawn annealed steel of moderately elevated hardenability by means of its chromium content that offers excellent hardness infiltration, and the molybdenum conveys consistency of hardness and soaring strength. Carbon Steel Reducing Cross Pipe Fittings responds quite well to heat-treatment and is comparatively trouble-free to machine in the annealed situation. Our Super Duplex Steel Equal Cross Pipe Fittings has excellent strength and wear resistance, along with good toughness, joined in the company of good ductility, and has the capability to defy stress at high temperatures.



Standards : ASME/ANSI B16.9, ASME B16.28, MSS-SP-43, BS4504, BS4504, BS1560, BS10 ASME 16.11, MSS SP-79, 83, 95, 97, BS 3799

Thickness : Schedule 5S, 10S, 20S, S10, S20, S30, STD, 40S, S40, S60, XS, 80S, S80, S100, S120, S140, S160, XXS and etc.

Size : Seamless Tee (1/2" ~ 24"), ERW / Welded / Fabricated Cross (1/2" ~ 48").

Type : Seamless / ERW / Welded / Fabricated

Form : Equal Cross, Unequal Cross, Reducing Cross, Pipe Cross, Butt weld Cross.

Cross Material & Grades

Stainless Steel Cross :

ASTM A403 WP316/316L, ASTM A403 SA / A 774 WP-S, WP-W, WP-WX 304/304L, ASTM A182 F316L, 304L, DIN 1.4301, DIN1.4306, DIN 1.4401, DIN 1.4404

Duplex & Super Duplex Steel Cross :

ASTM A815, ASME SA 815 UNS NO S31803, S32205. UNS S32750, S32950. Werkstoff No. 1.4462

Carbon Steel Cross :

ASTM A234, ASME SA234 WPB , WPBW, WPHY 42, WPHY 46, WPHY 52, WPH 60, WPHY 65 & WPHY 70.

Low Temperature Carbon Steel Cross : ASTM A420 WPL3, A420 WPL6

Manufacturers & Stockists of Nickel Alloy, Titanium Alloys, Special Metals & Stainless Steel Products

Alloy Steel Cross :

ASTM / ASME A/SA 234 Gr. WP 1, WP 5, WP 9, WP 11, WP 12, WP 22, WP 91

Copper Alloy Steel Cross : ASTM B122, B171, B466, B467, ASTM SB 61 , SB62 , SB151 , SB152 UNS No. C70600 (Cu-Ni 90/10), C 71500 (Cu-Ni 70/30), UNS No. C 10100, 10200, 10300, 10800, 12000, 12200

Nickel Alloy Buttweld Cross:

ASTM SB564, SB160, SB472, SB162 Nickel 200 (UNS No. N02200), Nickel 201 (UNS No. N02201), Monel 400 (UNS No. N04400), Monel 500 (UNS No. N05500), Inconel 800 (UNS No. N08800), Inconel 825 (UNS No. N08825), Inconel 600 (UNS No. N06600), Inconel 625 (UNS No. N06625), Inconel 601 (UNS No. N06601), Hastelloy C 276 (UNS No. N10276), Alloy 20 (UNS No. N08020), Titanium (Grade 2 & 5)

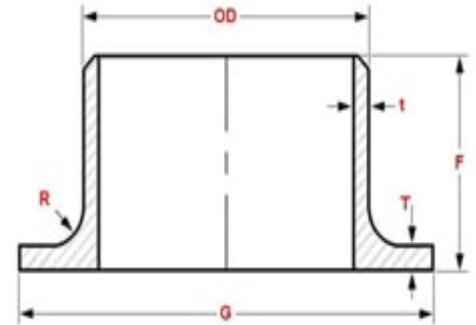


We offer wide range of Cross that in compliance with ASTM, ANSI, IS, BS and DIN standards at best Market prices in India. To know more about the latest price of Cross please feel free to contact us on sales@jadealloys.com or call us on +91 9987685906

Manufacturers & Stockists of Nickel Alloy, Titanium Alloys, Special Metals & Stainless Steel Products

STUB END

Jade Special Metals is one of the finest distinguished exporters and dealers of Stub End Pipe Fittings, which is non-magnetic, and provides excellent toughness, weld ability and formability. In several applications, Stainless Steel Stub End Pipe Fittings has been discovered to be an additional reasonable substitute for elevated titanium and nickel alloys. A number of usual applications of these Carbon Steel Stub End Pipe Fittings are marine atmosphere, off shore and also in chemical industries. These Alloy Steel Stub End Pipe Fittings was industrialized for the usage in halide-comprising atmospheres like seawater. Super Duplex Steel Stub End Pipe Fittings is austenitic steel considered for supreme crevice corrosion and resistance to pitting. Inconel Alloy Stub End Pipe Fittings is austenitic steel designed for maximum resistance to pitting and crevice corrosion.



Standards : ASME / ANSI - B 16.9, ASTM A403 - ASME SA403, ASME B16.9, ASME B16.25, ASME B16.28, MSS SP-43.

Thickness : Schedule 5S, 10S, 20S, S10, S20, S30, STD, 40S, S40, S60, XS, 80S, S80, S100, S120, S140, S160, XXS and etc.

Size : 1/2"NB TO 36"NB IN

Type : Seamless / ERW / Welded / Fabricated

Form : Long Stub Ends, Short Stub Ends, Lap Joint Stub Ends.

Stub End Material & Grades

Stainless Steel Stub End :

ASTM A403 WP316/316L, ASTM A403 SA / A 774 WP-S, WP-W, WP-WX 304/304L, ASTM A182 F316L, 304L, DIN 1.4301, DIN 1.4306, DIN 1.4401, DIN 1.4404

Duplex & Super Duplex Steel Stub End :

ASTM A815, ASME SA 815 UNS NO S31803, S32205. UNS S32750, S32950. Werkstoff No. 1.4462

Carbon Steel Stub End :

ASTM A234, ASME SA234 WPB , WPBW, WPHY 42, WPHY 46, WPHY 52, WPH 60, WPHY 65 & WPHY 70.

Manufacturers & Stockists of Nickel Alloy, Titanium Alloys, Special Metals & Stainless Steel Products

Low Temperature Carbon Steel Stub End: ASTM A420 WPL3, A420 WPL6

Alloy Steel Stub End:

ASTM / ASME A/SA 234 Gr. WP 1, WP 5, WP 9, WP 11, WP 12, WP 22, WP 91

Copper Alloy Steel Stub End: ASTM B122, B171, B466, B467, ASTM SB 61, SB62, SB151, SB152 UNS No. C70600 (Cu-Ni 90/10), C 71500 (Cu-Ni 70/30), UNS No. C 10100, 10200, 10300, 10800, 12000, 12200

Nickel Alloy Buttweld Stub End:

ASTM SB564, SB160, SB472, SB162 Nickel 200 (UNS No. N02200), Nickel 201 (UNS No. N02201), Monel 400 (UNS No. N04400), Monel 500 (UNS No. N05500), Inconel 800 (UNS No. N08800), Inconel 825 (UNS No. N08825), Inconel 600 (UNS No. N06600), Inconel 625 (UNS No. N06625), Inconel 601 (UNS No. N06601), Hastelloy C 276 (UNS No. N10276), Alloy 20 (UNS No. N08020), Titanium (Grade 2 & 5)

LONG STUB END



SHORT STUB END



MSS SP-43 TYPE A STUB END

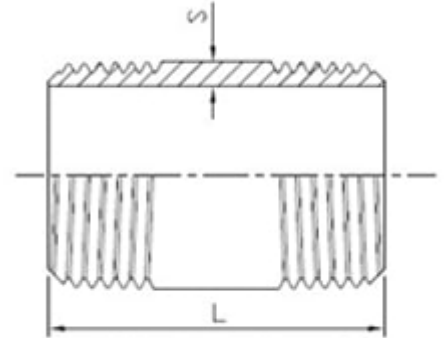


We offer wide range of Stub Endsthat in compliance with ASTM, ANSI, IS, BS and DIN standards at best Market prices in India. To know more about the latest price of Stub Ends please feel free to contact us on sales@jadealloys.com or call us on +91 9987685906

Manufacturers & Stockists of Nickel Alloy, Titanium Alloys, Special Metals & Stainless Steel Products

PIPE NIPPLE

We are the Butt-weld Pipe Nipple Manufacturer, stocker, and exporter and our products are being shipped all across the countries. All of the dimensions and designs largely conform to the required ASME and similar grades. To fulfill the requirements of our customers, all of the products are available in varied range and are designed out of numerous alloys like carbon steels, alloy steels, stainless steels, along with the non-ferrous metals which are certified to the high class standards. With special wall thickness and reducing sizes, our Butt-weld Pipe Nipple is available even in the customized shapes and designs as per the need of the clients.



Standards : ASME/ANSI - B16.9, ASTM A403 - ASME SA403, ASME B16.9, ASME B16.25, ASME B16.28, MSS SP-43.

Thickness : Schedule 5S, 10S, 20S, S10, S20, S30, STD, 40S, S40, S60, XS, 80S, S80, S100, S120, S140, S160, XXS and etc.

Size : Seamless Pipe Nipple (1/2" ~ 24"), ERW / Welded / Fabricated Pipe Nipple (1/2" ~ 48").

Type : Seamless / ERW

Type: Threaded Both End (TBE), Plain Both End (PBE), TBE X PBE

Pipe Nipple Material & Grades

Stainless Steel Pipe Nipple :

ASTM A403 WP316/316L, ASTM A403 SA / A 774 WP-S, WP-W, WP-WX 304/304L, ASTM A182 F316L, 304L, DIN 1.4301, DIN 1.4306, DIN 1.4401, DIN 1.4404

Duplex & Super Duplex Steel Pipe Nipple:

ASTM A815, ASME SA 815 UNS NO S31803, S32205. UNS S32750, S32950. Werkstoff No. 1.4462

Carbon Steel Pipe Nipple:

ASTM A234, ASME SA234 WPB , WPBW, WPHY 42, WPHY 46, WPHY 52, WPH 60, WPHY 65 & WPHY 70.

Low Temperature Carbon Steel Pipe Nipple: ASTM A420 WPL3, A420 WPL6

Alloy Steel Pipe Nipple:

ASTM / ASME A/SA 234 Gr. WP 1, WP 5, WP 9, WP 11, WP 12, WP 22, WP 91

Manufacturers & Stockists of Nickel Alloy, Titanium Alloys, Special Metals & Stainless Steel Products

Copper Alloy Steel Pipe Nipple: ASTM B122, B171, B466, B467, ASTM SB 61 , SB62 , SB151 , SB152 UNS No. C70600 (Cu-Ni 90/10), C 71500 (Cu-Ni 70/30), UNS No. C 10100, 10200, 10300, 10800, 12000, 12200

Nickel Alloy Butt-weld Pipe Nipple:

ASTM SB564, SB160, SB472, SB162 Nickel 200 (UNS No. N02200), Nickel 201 (UNS No. N02201), Monel 400 (UNS No. N04400), Monel 500 (UNS No. N05500), Inconel 800 (UNS No. N08800), Inconel 825 (UNS No. N08825), Inconel 600 (UNS No. N06600), Inconel 625 (UNS No. N06625), Inconel 601 (UNS No. N06601), Hastelloy C 276 (UNS No. N10276), Alloy 20 (UNS No. N08020), Titanium (Grade 2 & 5)



We offer wide range of Pipe Nipple that in compliance with ASTM, ANSI, IS, BS and DIN standards at best Market prices in India. To know more about the latest price of Pipe Nipple please feel free to contact us on sales@jadealloys.com or call us on +91 9987685906